

Re: Composing tasks and protected objects

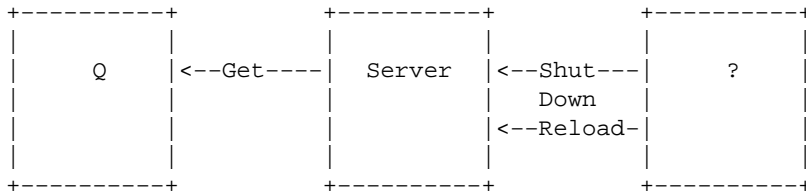
Source: <http://coding.derkeiler.com/Archive/Ada/comp.lang.ada/2005-08/msg00150.html>

- *From:* Jeffrey Carter <spam@xxxxxxx>
- *Date:* Sat, 06 Aug 2005 05:52:11 GMT

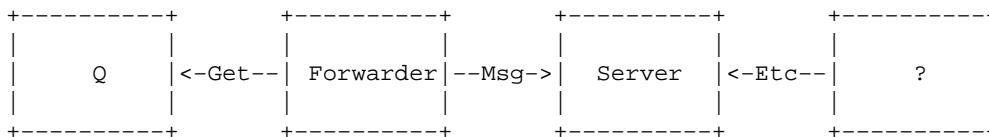
Florian Weimer wrote:

Suppose I want to write a selective accept which reads messages from a queue, and also support a special entry call to reload the configuration.

You need all calls to go the same way. Right now you're trying to do something like



where arrows indicate direction of call. This won't work, but it will work if you can turn that call to Get around. For this, you need a forwarder between the Queue and Server:



Now your task can look like

```

select
  accept Msg (Message : in ...) do
    Current_Message := Message;
  end Msg;

```

Re: Composing tasks and protected objects

```
    Process_Message (Current_Message);  
or  
    ... -- as in your example  
end select;
```

The only difficulty is terminating the Forwarder.

```
--  
Jeff Carter  
"Go and boil your bottoms."  
Monty Python & the Holy Grail  
01  
.
```